



If you would like to share news or information with our readers, please send the unique stories, business

news organization events, and school news to us including your name and phone number in case more information is needed.

For news and information consideration, please send to News@scdaily.com or contact
John Robbins **832-280-5815**
Jun Gai **281-498-4310**

Publisher: Wea H. Lee
General Manager: Catherine Lee
Editor: John Robbins, Jun Gai
Business Manager : Jennifer Lopez
Address: 11122 Bellaire Blvd., Houston, TX 77072
E-mail: News@scdaily.com

Arkema officials were warned of flood risks a year before Hurricane Harvey



Inside C2

Southern DAILY

Make Today Different

Southern Daily News is published by Southern News Group Daily

Tuesday, May 29, 2018 | www.today-america.com | Southern News Group

U.S. launches criminal probe into bitcoin price manipulation

(Reuters) - The U.S. Department of Justice has launched a criminal probe into whether traders are manipulating the price of bitcoin and other digital currencies, Bloomberg reported on Thursday.

The investigation concerns illegal practices that can influence prices such as spoofing, or flooding the market with fake orders to trick other traders, Bloomberg said, citing four people familiar with the matter.

Federal prosecutors are working with the Commodity Futures Trading Commission (CFTC), the report added.

Neither the Justice Department nor the CFTC were immediately available for comment.

Criminals have stolen about \$1.2 billion in cryptocurrencies since the beginning of 2017, as bitcoin's popularity and the emergence of more than 1,500 digital tokens have put the spotlight on the unregulated sector, according to estimates from the Anti-Phishing Working Group released on Thursday.

Representations of the Ripple, Bitcoin, Ethereum and Litecoin virtual currencies are seen on a PC motherboard in this illustration picture, February 13, 2018. REUTERS/Dado Ruvic/Illustration

The estimates were part of the non-profit group's research on cryptocurrency and include reported and unreported theft.

"One problem that we're seeing in addition to the criminal activity like drug trafficking and money laundering using cryptocurrencies is the theft of these tokens by bad guys," Dave Jevans, chief executive officer of cryptocurrency security firm CipherTrace, told Reuters in an interview.

Jevans is also chairman of APWG.

Of the \$1.2 billion, Jevans estimates that only about 20 percent or less has been recovered, noting that global law enforcement agencies have their hands full tracking down these criminals.

Their investigations of criminal activity will likely take a step back with the European Union's new General Data Protection Regulation, which takes effect on Friday.

"GDPR will negatively impact the overall security of the internet and will also inadvertently aid cybercriminals," said Jevans. "By restricting access to critical information, the new law will significantly hinder investigations into cybercrime, cryptocurrency theft, phishing, ransomware, malware, fraud and crypto-jacking," he added.

GDPR, which passed in 2016, aims to simplify and consolidate rules that companies need to follow in order to protect their data and to return control of personal information to EU citizens and residents.

The implementation of GDPR means that most European domain data in WHOIS, the internet's database of record, will no longer be published publicly after May 25. WHOIS contains the names, addresses and email addresses of those who register domain names for websites.

WHOIS data is a fundamental resource for investigators and law enforcement officials who work to prevent thefts, Jevans said.

He noted that WHOIS data is crucial in performing investigations that allow for the recovery of stolen funds, identifying the persons involved and providing vital information for law enforcement to arrest and prosecute criminals.

"So what we're going to see is that not only the European market goes dark for all of us; so all the bad guys will flow to Europe because you can actually access the world from Europe and there's no way you can get the data anymore," Jevans said.



FILE PHOTO: Representation of the Bitcoin virtual currency standing on the PC motherboard is seen in this illustration picture

U.S. jury awards Apple \$539 million in Samsung patent retrial

After nearly five days of deliberations, a U.S. jury on Thursday said Samsung Electronics Co Ltd (005930.KS) should pay \$539 million to Apple Inc (AAPL.O) for copying patented smartphone features, according to court documents, bringing a years-long feud between the technology companies into its final stages. The world's top smartphone rivals have been in court over patents since 2011, when Apple filed a lawsuit alleging Samsung's smartphones and tablets "slavishly" copied its products. Samsung was found liable in a 2012 trial, but a disagreement over the amount to be paid led to the current retrial over damages where arguments ended on May 18. Samsung previously paid Apple \$399 million to compensate Apple for infringement of some of the patents at issue in the case. The jury has been deliberating the case since last week. Because of that credit, if the verdict is upheld on appeal it will result in Samsung making an additional payment to Apple of nearly \$140 million.

In a statement, Apple said it was pleased that the members of the jury "agree that Samsung should pay for copying our products."

"We believe deeply in the value of design,"

Apple said in its statement. "This case has always been about more than money."

Samsung did not immediately say whether it planned to appeal the verdict but said it was retaining "all options" to contest it.

The new jury verdict followed a trial in San Jose, California, before Judge Lucy Koh that focused on how much Samsung should pay



for infringing Apple patents covering aspects of the iPhone's design. The jury awarded Apple \$533.3 million for Samsung's violation of so-called design patents and \$5.3 million for the violation of so-called utility patents.

Apple this year told jurors it was entitled to \$1 billion in profits Samsung made from selling infringing phones, saying the iPhone's design was crucial to their success.

Samsung sought to limit damages to about \$28 million, saying it should only pay for profits attributable to the components of its phones that

infringed Apple patents.

Jurors in the earlier trial awarded \$1.05 billion to Apple, which was later reduced.

Samsung paid \$548 million to Apple in December 2015, including \$399 million for infringement of some of the patents at issue in this week's trial.

Apple's case against Samsung raised the question of whether the total profits from a product that infringes a design patent should be awarded if the patent applies only to a component of the product, said Sarah Burstein, a professor of patent law at the University of Oklahoma.

All You Can Eat Japanese Seafood Buffet

Tokyo One
Westheimer Branch

Richmond
Beltway 8
Westheimer

Sushi & Sashimi

Sea food and Salad Bar

Fresh Oysters, Snow Crabs, Shrimps and Crawfish

Dessert Bar

Sushi Rolls

Lobsters
Season Special!
Live Fresh Only
時價 \$7.99

歡迎來Party
713.785.8899
(To make a reservation)
2938 W Sam Houston Pkwy S
Houston, TX 77042
誠徵帶位 (半工/全工)

***Lunch Buffet**
Mon-Fri (For adults) \$14.95
11am-3:30pm (For Kids 3-10歲) \$7.95
Sat-Sun (For adults) \$29.95
11am-4:00pm (For Kids 7-10歲) \$14.95
(For Kids 3-6歲) \$8.95
Holiday Price May Vary!

***Dinner Buffet**
Mon-Sun (For adults) \$29.95
4pm-9:30pm (For Kids 7-10歲) \$14.95
(For Kids 3-6歲) \$8.95
***Birthday (6人以上)**
Birthday People 50% off
不能與其他Coupon合用 ID帶來

港式粵菜 多倫多風味

名門金宴
Regal Seafood
Fine Dining & Banquet

海鮮小炒 精美點心

周一至周五 名門自選和菜 Dinner Combo

送 老火例湯 Free Soup of The Day

二和菜 Dinner for two \$23.99
三和菜 Dinner for three \$33.99
四和菜 Dinner for four \$43.99
五和菜 Dinner for five \$53.99
六和菜 Dinner for six \$63.99

根據您的預算，為您量身定做菜單，暨氣派又實惠！
遊水海鮮直接從加州拿貨，空運到港，省去批發商環節，全德州最便宜！

稻香村集團美國總店：
Regal 名門金宴
電話：281-494-8888
地址：12350 southwest Freeway, Stafford, TX77477

稻香村集團美國分店：
E-Tao 稻香村
電話：713-965-0888
地址：5135 west alabama st, suite 7295, Houston, TX77056
(Galleria Mall二樓，Nordstrom和Macy's之間)

片皮鴨 \$29.99

[E-Tao]

Arkema officials were warned of flood risks a year before Hurricane Harvey

Officials at Crosby’s Arkema chemical plant were warned that the facility was at risk for flooding a year before Hurricane Harvey’s deluge resulted in a chemical fire at the plant. But facility employees, with the exception of a manager who retired in early 2017, “appeared to be unaware of this information,” an inquiry by the U.S. Chemical Safety and Hazard Investigation Board found. The board concluded that Arkema, a French multinational company that manufactures chemicals used to create plastic products, was not prepared for the 6 feet of water that wiped out the facility’s power and backup generators. With the power out and cooling systems failing, volatile organic peroxides exploded multiple times over the course of a week, producing towering pillars of fire and thick plumes of black smoke.

The board — an independent federal agency that investigates industrial chemical accidents — released a 154-page report Thursday morning detailing findings and recommendations to the company, to Harris County and to industry leaders. Those recommendations include developing better policies for determining risks from extreme weather events, such as flooding, and protecting first responders from releases of hazardous chemicals. CSB Safety Video about the 2017 Fire at the Arkema Chemical Plant in Crosby, Texas, following Hurricane Harvey Also Thursday, Harris County District Attorney Kim Ogg said evidence would be presented to a grand jury “in coming weeks” as part of the county’s lawsuit against the company. The chemical safety board can offer recommendations and guidance, but it can not fine or punish a

company based on its findings. Janet Smith, Arkema spokeswoman, said in a statement that the company was pleased with the board’s investigation because it “accurately depicts the unforeseeable nature of the situation Arkema faced during Hurricane Harvey.” But board members determined that the company’s emergency response plan was insufficient, confirming a Houston Chronicle report in November. However, in her statement, Smith said, the report “shows that Arkema had multiple policies and safeguards in place to address the risks associated with hurricanes, that Arkema followed those policies, and that our employees went to extraordinary lengths, under difficult conditions, to maintain safety at our site.” Board officials said Thursday that Arkema is being proactive in its efforts to understand the facility’s flooding risks and take steps to make sure an incident such as this doesn’t happen again.

“Arkema wasn’t prepared, but they were not alone,” Vanessa Allen Sutherland, the board’s chairwoman, said at a Thursday news conference. “The most valuable lesson here is that facilities should plan and plan again. Don’t be lulled into a false sense of security by thinking it can’t happen here.” As Harvey bore down on Southeast Texas and the National Hurricane Center warned of potentially “catastrophic” or “life-threatening” flooding, the company’s plans for protecting its product were simple: keep the chemicals cold on-site. If they grew too hot, they would explode.



U.S. Chemical Safety and Hazard Investigation Board investigator Mark Wingard speaks to members of the media regarding the results of their investigation of the Arkema facility in Crosby, Texas, and Hurricane Harvey during a press conference at the Hyatt Regency Thursday, May 24, 2018, in Houston

Arkema had multiple freezer buildings, six backup generators, and, as a last resort, refrigerated trucks. But the company didn’t consider flooding a “credible risk,” the report states, confirming previous reporting by the Chronicle. Officials thought this despite a 2016 report from its insurer, Factory Mutual Insurance Co. (FM Global), stating that the facility was at risk for flooding and parts of it sat in both the 100-year and 500-year flood plains, the report states. FM Global was not Arkema’s insurer during Hurricane Harvey.



高科技快速數位快印來臨!

爲您提供各類廣告宣傳產品，設計製作一站式服務!

**MEET ALL YOUR PROMOTIONAL NEEDS
UNDER ONE ROOF**

美南印刷
USA PRINTING
A Southern Chinese Daily Company



✓專業設計 ✓全彩印刷 ✓數碼快印 ✓大幅噴繪

TEL:281-983-8152(CHINESE) 281-983-8154(ENGLISH) WE’LL HELP YOU GET THE STAND OUT

1122 BELLAIRE BLVD., HOUSTON, TX 77072 E-MAIL: JENNIFERITC@GMAIL.COM

Editor's Choice



Women's Champions League Final - Olympique Lyonnais vs VfL Wolfsburg



Riot policemen try to control a march of students from the UPEA (Public University of El Alto) during a protest to demand an increase in their budget in El Alto



Students from the UPEA (Public University of El Alto) burn a tire during a protest to demand an increase in their budget in El Alto outskirts in La Paz



Mexico's Foreign Minister Luis Videgaray shakes hands with his Japanese counterpart Taro Kono during a welcoming ceremony in Mexico City



Leftist front-runner Andres Manuel Lopez Obrador of MORENA and his wife Beatriz Gutierrez Muller attend a campaign rally in Mexico City



Supporters of leftist front-runner Andres Manuel Lopez Obrador of MORENA shout slogans during a campaign rally in Mexico City



The Prince of Wales, Great Master of the Honourable Order of the Bath, attends the Service of Installation of Knights Grand Cross of the Order at Westminster Abbey in central



Soccer Football - 2018 World Cup - Colombia Training - Nemesio Camacho El Campin Stadium, Bogota, Colombia - May 24, 2018 Colombia's national soccer coach Jose Pekerman (R) talks to Luis Muriel. REUTERS/Jaime Saldarriaga



A member of the Order of the Bath as the Prince of Wales, Great Master of the Honourable Order of the Bath, attends the Service of Installation of Knights Grand Cross of the Order at Westminster Abbey in central London

美食美景盡在美南

2018 休士頓 美南旅遊指南

醉美的城市•藝術的享宴

Houston Travel Guide

2018

5

徵

廣告客戶

勿錯失商機

即將截稿

歡迎洽詢業務部:

秦鴻鈞 Christi Mei

713-306-6808

Christimei2011@ail.com

朱幼楨 Emerson Chu

713-828-2689

Emersonchu@msn.com

黃麗珊 Nancy Huang

713-818-0511

nancyh6688@gmail.com

黃梅子 Jenny H. Lee(MeiZi)

832-260-8466

meizihuang@yahoo.com

韋霓 Winnie Yu

301-509-1137

Winnie.yu10@gmail.com

美南日報

INTERNATIONAL
TRADE CENTER
Houston Texas

美南新聞日報·華府新聞日報·達拉斯日報 美南新聞 ■ Tel: 281-498-4310 ■ Fax: 281-498-2728

■ www.scdaily.com ■ 11122 Bellaire Blvd., Houston, Texas 77072, U.S.A. Serving Since 1979 NO. 10245



Lava from the Kilauea volcano approaches the Puna Geothermal Venture plant on Hawaii's Big Island on Monday. (Photo/Getty Images)

In the weeks since the Kilauea volcano began belching lava into Hawaii's residential areas, the fiery flow has destroyed dozens of structures and covered scores of acres on the Big Island. But authorities fear its destructive reach could ravage at least two more cornerstones of the state: its power supply and, a little less tangibly, its all-important tourism industry.

On Monday evening local time, the Hawaii County Civil Defense agency announced that lava from nearby fissures had begun to encroach on the southern edge of a significant source of the Big Island's power, the Puna Geothermal Venture.

The plant harvests hot liquid and steam from underground wells to drive turbine generators for electricity, which is then sold to the state's utility.

Another risk, besides the loss of power, rests in what might happen if the lava overcomes the state's protective measures: "There's a steam release, there's many chemicals, but primarily the critical factor would be hydrogen sulfide, a very deadly gas," Hawaii's Emergency Management Agency chief, Tom Travis, told reporters Monday night.



County, state, and federal partners have been collaborating closely to monitor the situation and work with PGV to ensure the safety of the surrounding communities," the civil defense agency said in its alert. "Ten of the eleven wells have been quenched. Efforts are ongoing to make sure the site is secure and the community is kept safe."

When officials refer to "quenching," Travis explained, they mean "filling [the wells] full of cold water so that the weight of the cold water sitting in the pipe, the long pipe, is sufficient that instead of hot water entering the bottom of the well, cold water exits the bottom of the well."

Kilauea's Wrath Threatens Power Plant — And Hawaii's Most Powerful Industry

Compiled And Edited By John T. Robbins, Southern Daily Editor

It is the second step after simply shutting all the wells, which he says they already did when the event began. Crews were working overnight to quench the 11th and final well. "Once that step is taken, we will be in a much more solid state for having lava overflow the site," Travis added late Monday. "It's not easy to predict where it's going to go and when it's going to get there. So it's important that we get what we can done now."

Meanwhile, elsewhere on the island, the longer the lava keeps flowing, the longer one of the state's premier tourist attractions remains closed to ensure visitors' safety. About two-thirds of Hawaii's Volcanoes National Park closed May 11, right around the start of the summer tourist season — and it remains closed, likely deterring a substantial chunk of the park's more than 2 million annual visitors.



A golfer makes the best of the situation as a huge ash plume rises from Kilauea's summit nearby on Monday. (Photo/AP)

A National Park Service report published last month estimated that those visitors spent \$166 million in communities nearby last year — spending that "supported 2,020 jobs in the local area, and had a cumulative benefit to the local economy of \$222,394,900."

The number of visitors to the park has "increased by 58 percent" since an eruption on Kilauea's summit a decade ago, according to the NPS.

Now that Kilauea's activity has dramatically escalated, however, local businesses have seen their income diminish in seemingly equal proportion.

"We have a family to support so we hope that the national park will reopen again soon," one small-business owner told Reuters, "otherwise this could have a serious impact on our life."

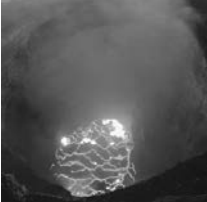
Related

Hawaii workers rush to shut down power plant in path of lava

Molten lava erupting from the Kilauea Volcano on Hawaii's Big Island is creeping closer to a key geothermal power plant, as workers rush to shut down the facility to prevent a major release of toxic fumes.

The Puna Geothermal Venture provides about 25 per cent of the island's power, and lava has crept to within 200 metres.

On Saturday the volcano caused its first injury when erupting lava hit a man sitting on his balcony, shattering his leg.



Molten lava spews from over 20 fissures in the ground from the volcano.

Hawaii Island's Kilauea Volcano has been in a fit of rage since erupting in early

May, spewing toxic gas, hurling boulders from its summit and cracking open more than 20 fissures.

The current activity at Kilauea is the latest phase of an eruption that began in 1983 when basaltic lava flows began leaking out of a vent on Kilauea's East Rift Zone named Pu'u 'Ō'ō. The lava has flowed intermittently since then. Basalt is the most common rock type in the Earth's crust, according to the U.S. Geological Survey (USGS). Shield volcanoes, like Kilauea, are made almost entirely of basalt. Basaltic lavas are more fluid than other types such as andesites or dacites.

What's happening in Hawaii is very typical of Kilauea, according to Dr. Peter Ward, a retired volcanologist who spent 27 working for the USGS.



Lava shoots into the night sky from active fissures on the lower east rift of the Kilauea volcano, Tuesday, May 15, 2018 near Pahoa, Hawaii. (Photo/AP)

Ward, who once climbed Kilauea, has dedicated a large portion of his career to examining how volcanoes cause both cooling and warming of Earth's climate.

One example of warming he points to occurred in central Iceland in August 2014 when Bardabunga Volcano began a six-month eruption.

tion.

Ward contends that the Bardarbunga eruption played a major role in 2016 being the warmest year on record. The subsequent basaltic lava flow spilled over 30 square miles in just six months, which is larger than the size of Manhattan (23 square miles).

In comparison, Ward said it's taken over 30 years for Kilauea to ooze that amount of lava. He said large basaltic eruptions release gases such as chlorine and bromine into the atmosphere and they can deplete the ozone layer. When the ozone layer is depleted, more ultraviolet B radiation reaches Earth. This type of radiation can cause skin cancer, sunburn and the warming of Earth, he explained. While volcanoes are able to impact the global climate, there won't be any noticeable changes to the weather around Hawaii Island thanks to the current eruption.

The eruptions in Hawaii are not big enough to cause changes in the weather, according to Ward.



Dr. Peter Langdon Ward, a geophysicist retired from the United States Geological Survey (1998).

"The effect of the volcano on weather would be negligible. The weather changes are all perfectly normal," he said.

Ward described the activity at Kilauea as "awe-inspiring," but it doesn't reflect the fury and power of other

potential volcanoes.

The eruption of Mount Pinatubo in 1991 in the Philippines spewed ash more than 22 miles into the sky. Bardarbunga's ash cloud reached 16 miles and the deadly Mount St. Helen's eruption in 1980 unleashed ash about 15 miles into the air. In comparison, the ash cloud from Kilauea has reached around 5-6 miles into the atmosphere.

The eruption of Mount Pinatubo was the second largest of the 20th century, behind only the 1912 Mount Novarupta eruption in Alaska. The volcano had produced nearly 20 million tons of sulfur dioxide into the stratosphere. As a result, researchers found that over the next 15 months, the Earth underwent a period of

global cooling with a recorded drop in the average global temperature of about 1 degree Fahrenheit (0.6 of a degree Celsius).

It could be weeks or months before the Kilauea eruption subsides, with "more of the same" activity expected, Ward said. He added that the biggest concern going forward is keeping the public educated, but the agencies involved have done a good job so far.

The main threat to life remains in the immediate vicinity of the volcanoes, areas that have already been evacuated. However, Ward said Hawaiian volcanoes are not particularly life-threatening when compared to other volcanoes around the world.

Volcanoes typically start with lots of earthquake activity, which serve as plenty of warning for residents to execute their evacuation strategy. In the days leading up the May 3 eruption, hundreds of small earthquakes were observed, which prompted officials to get the public ready to evacuate.

While over two dozen homes have been lost in the Leilani Estates neighborhood, there have been no reports of fatalities.

Warnings from the USGS and the Philippine Institute of Volcanology helped save over 5,000 lives ahead of Mount Pinatubo's eruption.



A plume of steam rises as lava enters the ocean near Pahoa, Hawaii, Sunday, May 20, 2018. (AP Photo/Jac C. Hong)

The Kilauea eruption can serve as a reminder of the danger of volcanoes, especially for those who live in areas where volcanoes have been dormant, like the Pacific Northwest, Ward said.

Tens of thousands of people live in Mount Rainier's lahar-hazard zones, in the Seattle and Tacoma, Washington, suburbs, according to the USGS. The volcano has been resting since its last eruption about 1,000 years ago, but that doesn't mean people can't learn about certain hazards.

"Hopefully, [an eruption] won't occur in our lifetime, but it could," Ward said.

"It's really important that you be aware of what your risk is, because if something suddenly starts to happen you've given it some thought, you can decide with your family what you need to do." (Courtesy staradvertiser.com)

美南國際電視15.3頻道

- 免費高清頻道
- 免費數位頻道
- 免費中英文頻道



Southern Television 15.3								2018年5月份 電視頻道節目表		5/28/2018 - 6/3/2018	
星期時間	MON	TUE	WED	THU	FRI	SAT	SUN				
	28	29	30	31	1	2	3				
00:00-00:30	中國文藝 (重播)	美南新聞 / 台灣新聞 / 國際新聞 / 大陸新聞					地理・中國 (重播)				
00:30-01:00							明星加油站 (重播)				
01:00-01:30	生活魔法師 (首播)					環球神奇炫 (重播)	味道 (重播)				
01:30-02:00	經典電影 (重播)	動物傳奇 (重播) (English)	Story China 故事在中國 (重播)	防務新觀察 (重播)	中國大舞臺 (重播)						
02:00-02:30		中國功夫 (首播)									
02:30-03:00		今日關注 (重播)									
03:00-03:30		地理・中國 (重播)	中國功夫 (重播)				經典電影 (重播)				
03:30-04:00	Fun Way to Learn Chinese (首播)					司馬白話 (重播)					
04:00-04:30	特別呈現 (重播)	電視劇《家的N次方》(重播) (English Subtitles)					武林風 (重播)				
04:30-05:00	空姐新發現 (重播)										
05:00-05:30	Story China 故事在中國 (重播)	電視劇《傾城之戀》(重播) (English Subtitles)					中國大舞臺 (重播)				
05:30-06:00	國際新聞 / 大陸新聞 / 台灣新聞	美南新聞 / 台灣新聞 / 國際新聞 / 大陸新聞						國際新聞 / 大陸新聞 / 台灣新聞			
06:00-06:30	防務新觀察 (重播)	海峽兩岸 (重播)					電影藏密 (重播)				
06:30-07:00											
07:00-07:30	謝謝我的家 (重播)	健康之路 (重播)			環球神奇炫 (首播)	檔案 (首播)	經典電影 (首播)				
07:30-08:00											
08:00-08:30	文明之旅 (重播)	Story China 故事在中國 (首播)	快樂童年 (重播)	中國大舞臺 (首播)	空姐新發現 (首播)	電影藏密 (首播)	國際新聞 / 大陸新聞 / 台灣新聞				
08:30-09:00		粵語天地 (重播)	明星加油站 (首播)	洋言洋語 (重播)							
09:00-09:30	今日關注 (首播)					電影藏密 (重播)					
09:30-10:00	國際新聞 / 大陸新聞 / 台灣新聞	美南新聞 / 台灣新聞 / 國際新聞 / 大陸新聞									
10:00-10:30	台灣心動線 (重播)	美食風味 (重播)	爸囡囡很大 (重播)	城市一對一 (重播)	文人政事 (重播)	Howdy Philippines! (首播)	中國輿論場 (首播)				
10:30-11:00	生活 (重播)										
11:00-11:30	電視劇《家的N次方》(首播) (English Subtitles)					特別呈現 (首播)					
11:30-12:00	卡通片《蜜蜂花園》(首播)										
12:00-12:30	洋言洋語 (首播)					粵語天地 (首播)					
12:30-13:00	特別呈現 (重播)	來吧灰姑娘 (重播)	武林風 (重播)	中國詩詞大會 (重播)	武林風 (首播)	中國詩詞大會 (首播)	中華文化遺產 (首播)				
13:00-13:30	中國文藝 (重播)	中華文化遺產 (重播)	地理・中國 (重播)	幸福來敲門 (首播1)	幸福來敲門 (首播2)						
13:30-14:00		美南新聞 / 台灣新聞 / 國際新聞 / 大陸新聞					Howdy Philippines! (重播)	遊在美國 (首播)			
14:00-14:30	美食風味	爸囡囡很大	城市一對一	文人政事	台灣心動線						
14:30-15:00	生活 (重播)					快樂童年 (首播)	來吧灰姑娘 (首播)				
15:00-15:30	電視劇《傾城之戀》(首播) (English Subtitles)					中國文藝 (首播)					
15:30-16:00	海峽兩岸 (首播)					味道 (首播)	謝謝我的家 (重播)				
16:00-16:30	健康之路 (首播)			游在美國 (重播)	司馬白話 (重播)						
16:30-17:00				我的留學生生活 (重播)	明星加油站 (重播)	檔案 (重播)	文明之旅 (首播)				
17:00-17:30	美南新聞 / 台灣新聞 / 國際新聞 / 大陸新聞					幸福來敲門 (重播1)	幸福來敲門 (重播2)				
17:30-18:00											
18:00-18:30											
18:30-19:00											
19:00-19:30											
19:30-20:00											
20:00-20:30											
20:30-21:00											
21:00-21:30											
21:30-22:00											
22:00-22:30											
22:30-23:00											
23:00-23:30											
23:30-00:00											

“電視上播我演的電影，我肯定不看”

加裏·奧德曼戛納回顧電影藝術人生

第71戛納國際電影節完成了它的Rendez-vous系列的活動。該活動從上周開始，《黑豹》導演瑞恩·庫格勒是第壹位嘉賓，繼而是克萊斯托弗·諾蘭和約翰·特拉沃爾塔。

上周五，該活動邀請加裏·奧德曼出席。這位演員今年早些時候因在《至暗時刻》中扮演丘吉爾而贏得了奧斯卡獎。

加裏·奧德曼以往的經典作品還包括《席德與南茜》、《魔鬼警長地獄鎮》、《刺殺肯尼迪》、《吸血殭屍驚情四百年》、《真實羅曼史》、《這個殺手不太冷》、《哈利波特》系列、《黑暗騎士》三部曲等。

奧德曼從他15歲時第壹次意識到自己想成為壹名演員的時候開始講起。奧德曼表示他當時是第壹次看現場演出，主角的表演讓他覺得“好像房

間忽然亮了。”奧德曼開玩笑說，“這就是酗酒者稱之為精神覺醒的那種東西。”

他接著解釋說，他在倫敦皇家藝術學院的早期表演嘗試失敗了，這讓他大吃壹驚。但當他考入布魯斯福德戲劇學院時，他學到了他至今仍在使用的壹些技巧。“我是我同屆第壹個做演員的人。”奧德曼說。他還為那些有抱負的演員提供了兩個基本的建議：“好好研究劇本，別遲到。”他繼續說，“有些演員的行為方式對我來說是不可原諒的，因為這不僅僅關乎妳和妳的角色。”

奧德曼講述了壹個有趣的軼事，關於壹個他早期回絕的電影角色。這部電影就是《叛艦喋血記》由梅爾·吉布森和安東尼·霍普金斯主演。奧德曼曾被邀請出演梅爾·吉布森那個角色，但他拒絕了，以便他可以在喬·奧頓寫的劇本中扮演主角。“我的經紀人威脅說以後不會再代表我了。”

奧德曼還承認，隨著年齡的增長，他對電影的選擇更加務實。“妳必須工作，送妳的孩子上大學，過真實的生活，把食物放在桌子上，妳有

所有的責任，妳不能總是等待大的角色。”奧德曼還承認，他差點拒絕了他《席德與南茜》中的角色，因為他想，“誰會在乎壹個朋克音樂家的故事？”

奧德曼還被問及，作為演員，是否曾經覺得沒有安全感。“我認為每個人都總是在質疑自己。懷疑和不安感是壹件好事。它讓妳不被麻痺。不過拍攝《鍋匠，裁縫，士兵，間諜》時差點被壓垮。”

這位演員還承認，在經歷了長達四十年的職業生涯之後，他仍然享受著自己的工作。當扮演現實人物時，他肩負起壹定的責任，就像他在拍攝《至暗時刻》那段時間壹樣。

“如果那個人已經離世，但還有家人，像丘吉爾，那就太好了。這份工作讓妳接觸到奇妙的事物和非凡的人，但妳對這些人的記憶負有責任。尤其是那些還活著的人。”奧德曼說。

最後，奧德曼被問到他是否曾經在電視上看到他拍攝的電影，如果是的話，他會坐下來觀看嗎？“我想坐在那裏看著自己，真是悲哀的壹天。”奧德曼笑著說。“這並不是說我對以前的作品感到羞愧，有些作品對我來說並不重要，有些是我喜歡的，但它們都已經是過去了。”

當被問及他最喜歡哪部電影時，這位傳奇演員回答說：“我總是說，我要拍的下壹部電影。”



《金蟬脫殼2》史泰龍回歸

復古飯制藝術海報曝光 致敬好萊塢不老傳奇

好萊塢越獄動作片《金蟬脫殼2》壹直備受影迷期待，西爾維斯特·史泰龍的重磅回歸更是成為影迷們討論的焦點。“硬漢不老”的情懷也吸引眾多網友進行自發創作，致敬史泰龍。

近日，壹組由粉絲自制的手繪藝術海報曝光，海報寫實又極具美國復古畫報風格，仿佛重回史泰龍經典角色初現銀幕的情景，在影迷中掀起壹陣致敬史泰龍的風潮。海報中刻畫的人物時至今日依舊讓人記憶猶新、熱血沸騰，而《金蟬脫殼2》也將繼續傳承這股燃魂不息壹戰到底的精神。據悉，電影《金蟬脫殼2》有望引進中國內地上映。

這組飯制手繪藝術海報壹共六張，畫風熱血激昂。史泰龍在《敢死隊》、《洛奇》、《第壹滴血》和《浴血擒魔》等經典電影中塑造的銀幕形象壹壹再現，掀起壹股“回憶殺”。與此同時，史泰龍在《金蟬脫殼2》中的角色也隨之呈現，五大銀幕形象生動記錄了他的銀幕高光時刻。

從1976年到2018年，42年間史泰龍塑造了無數銀幕經典形象，拳擊手洛奇的為己而戰、退伍軍人蘭博的英勇無畏、幹探哥比提的赤膽忠心、老兵巴尼的身手不凡，每每重溫都令人熱血沸騰。每張手繪海報上方的標語，既是粉絲們對他的無限崇敬，也是對史泰龍和他所演繹作品的真切描述。

好萊塢越獄動作巨制《金蟬脫殼2》由史蒂芬·C·米勒執導，西爾維斯特·史泰龍、黃曉明、戴夫·巴蒂斯塔、傑米·金等聯袂出演。



尚格雲頓主演《深海越獄》曝角色海報



美國動作電影《深海越獄》即將於6月8日正式登陸中國大銀幕。今天，該片也曝光了兩位主角的“絕境生天”版角色海報。海報上的兩位人物，正是影片中的兩位主角特工維勒（尚格·雲頓飾）和特工馬可（杜夫·龍格爾飾）。

在《深海越獄》中，中情局特工維勒與德國特工馬可共同被關在深海的黑獄中。深海的暗礁之下危機四伏，戰勝敵人，重見天日，將是他們共同的任務。

妳還記得“上上下下左右左右BA-BA”嗎？角色海報中的兩位特工形象，頗有80後、90後兒時經典紅白機遊戲《魂門羅》的範兒。兩位硬漢手握機槍，而他們身後的深海背景，不由得讓人聯想到關於《魂門羅》這款遊戲所瘋傳的“水下八關”。《魂門羅》作為壹款世界流行的經典遊戲，其創意起源是來自於“老雷公”雷德利·斯科特的科幻電影《異形》，而《魂門羅》中的硬漢形象，正是那個時代電影銀幕上的標準版硬漢：肌肉大叔手握機槍，掃清阻擋在自己面前的壹切敵人。

《深海越獄》講述了頂級特工維勒（尚格·雲頓飾演）莫名陷入的壹場戰局。

他在被捕後困於深海的核潛艇中，而這座核潛艇則是美國CIA的壹處黑獄。在黑獄中，維勒遇上了同被困在此處的特工馬可（杜夫·龍格爾飾）。潛艇在深海深處巡遊，而潛艇內部又有著復雜精密的機關設計，再加上四處潛伏的未知敵人，想要逃出去根本是無稽之談。經典的機關設計，連環燒腦加硬漢對撞，都是該片的看點。

資深的動作片粉絲或者影迷壹定還記得，從《再造戰士》開始，尚格·雲頓和杜夫·龍格爾兩人在過去的26年中合作了超過14部電影，而且都是以對手的方式出現在銀幕上，站在不同陣營，有時正面火拼，有時勾心鬥角。但在這部《深海越獄》中，雙方將在銀幕上聯手出擊——逃出這座不可能翻越的深海黑獄。

危機四伏的黑獄、無法逃出的深海，這兩個至關重要的問題如陰影般籠罩著兩位特工。再加上暴力審訊，暗殺潛伏，而陷害他們入獄的U盤裏究竟藏有什麼重要信息？迷霧重重，連環燒腦。只有雙雄共同出擊，才能解決這壹切的危機。兩位特工將打破深海黑獄無法翻越的神話，聯手戰鬥，打敗壹切阻擋他們重獲自由的敵人。

無論你是想開奶茶店或是你現有生意增加額外收入

Tapioca King

助你開拓珍珠奶茶生意

●全美南最大、最具經驗、貨品齊全，服務最完善之奶茶供應商●

Phone: 281-933-6660
Fax: 281-933-6662

適宜各式大小餐館

包括：圖片 Menu、封口機、攪拌機、各種原料，定能帶來可觀的收入



F05_TAPIOCA KING林凌霞246B_8

雲天燒腊麵食家

粥粉麵飯

特價晚餐

京都肉排	8.95	明爐燒鴨	
葱油鯧魚	8.95	蜜汁叉燒	
北菇雞	8.95	東江鹽水雞	
海蜆燻蹄	8.95	新鮮游水魚	
干扁四季豆	7.95	生猛龍蝦	
芝麻雞	8.95		
斑腩豆腐煲	9.50		
鹹魚雞粒豆腐煲	8.95		
蠔油鴨掌	6.95		
火腩茄子生蠔煲	9.50		
韭菜豬紅	5.95		
椒鹽鴨下巴	6.95		

★和菜皆送例湯水果

菜色價格如有變更 以本樓公布為準

9380 Bellaire Blvd, Houston, TX 77036 (百佳超市同棟購物中心)

雲天燒腊麵食家

粥粉麵飯

特價午餐 \$5.75 11AM-3PM

歡迎光臨

八人和菜 \$158.00	十人和菜 \$168.00
北京片皮鴨	雪花海鮮羹
琵琶豆腐	北京片皮鴨
蜜桃蝦	琵琶豆腐
薑蔥雙龍蝦	黑椒牛肉
黑椒牛肉	薑蔥雙龍蝦
清蒸游水魚 (大)	香橙骨
蒜蓉豆苗	炒三鮮
炒三鮮	蜜桃蝦
	清蒸游水魚
	蒜蓉豆苗

Kuving 慢磨原汁机

蔬果汁為高能量的濃縮營養食物是食療或食補的濃液

健康好喝

Kuving 是當今最受歡迎的品牌不僅好用，而且性價比特別好 適宜群體大眾使用

休士頓獨家代理：李醫師中醫肝膽科 電話：832-405-5566 微信：HNQ3366

金冠 CROWN SEAFOOD RESTAURANT

為慶祝本店開業二周年紀念！

現凡在本店惠顧滿五十元，即可享用五元雙龍蝦折扣。

點心 and 特價午餐除外

特價午餐 (Lunch specials) (週一至週五) 11am-3pm (假日除外)

一個 Order, 兩只龍蝦 (只限堂食)

\$21.99

www.crownseafoodrestaurant.com

10796 Bellaire Blvd., Suite C Houston, TX 77072 (at Wilcrest)

Tel: 281-575-1768 Fax: 281-575-1763

特價海鮮

不限量，隨意點，限堂吃

德州生蠔 \$11.99 (6只) \$21.99 (12只)

維吉尼亞螃蟹 \$11.99 (沙茶粉絲煲)

特別推薦

- 花旗參響螺燉雞
- 沙茶桂花腸
- 金冠炒飯
- 玫瑰豉油雞
- 脆皮炸子雞
- 花旗參響螺燉烏雞
- XO韭菜花炒花腸

休士頓夜市(Taiwan Yes Taiwan Song)熱鬧登場 讓世界看見台灣



陳家彥處長(右4)、林副處長映佐(右1)、莊主任雅淑(左2)與臺灣公共事務會提供台灣小吃攤位合影，中間為總會長郭正光(右3)、僑務委員張世勳(左1)、僑務諮詢委員楊明耕(右2)

休士頓臺灣同鄉會4月21日在台灣人活動中心舉辦「Taiwan Yes Taiwan Song 台灣夜市台灣頌」小吃美食園遊會熱鬧登場，現場臺灣小吃美食、臺灣童玩、臺灣文化以及台灣民俗表演，在涼爽天氣助陣下，各地民衆熱情湧入，盛況更勝以往，駐休士頓臺北經濟文化辦事處陳家彥處長、林映佐副處長、僑教中心莊雅淑主任以及多位組長均出席與鄉親同樂，德州州眾議員 Gene Wu、休士頓市議員 Jack Christie 及韓國總領事 Kim Hyung Gil 夫婦亦前往參與。



陳家彥處長(左1)、林副處長映佐(右2)、莊主任雅淑(右1)、休士頓台灣同鄉會會長何世杰(右4)與德州州眾議員 Gene Wu (D-TX) (右3)及德州哈里斯郡第4區郡政委員 R. Jack Cagle 之代表 Kent Clingerman (左2)等在「Taiwan Yes Festival」活動中合影。



另為增進主流社區支持臺灣加入第71屆世界衛生大會(WHA)議題，現場並擺設致函美國衛福部長 Alex Azar 連署攤位，吸引許多僑胞以及主流人士響應。

狀，表彰本活動保存及提升台灣文化特色，並期許未來持續舉辦以成為社區傳統。德州 AM1070 廣播節目製作人暨主持人 Jack Chambers 以及多家華文媒體並前往採訪。當天活動除熱賣的人氣小吃外還有商品攤位出售台灣特色產品，另外還有德州風味的裝飾品及倍受孩童喜愛的射飛鏢、彈珠台、撈金魚等遊戲，場面熱鬧歡樂。臺灣傳統基金會當天在活動中心的大廳舉辦 Taiwanese Culture & Arts Fair，準備了各式各樣的台灣文化和童玩活動，宣揚台灣文化，並演出以英語發音的「日月潭傳奇」及「福爾摩沙的馬偕醫生」布袋戲，深受來賓喜愛，另為增進主流社區支持臺灣加入第71屆世界衛生大會(WHA)議題，現場並擺設致函美國衛福部長 Alex Azar 連署攤位，吸引許多僑胞以及主流人士響應。



另為增進主流社區支持臺灣加入第71屆世界衛生大會(WHA)議題，現場並擺設致函美國衛福部長 Alex Azar 連署攤位，吸引許多僑胞以及主流人士響應。



德州 AM1070 廣播節目製作人暨主持人 Jack Chambers 參加「Taiwan Yes Festival」活動並採訪報導



陳家彥處長(右4)、林副處長映佐(右1)、莊主任雅淑(右2)與臺灣夜市展示台灣黑熊攤位合影，左2為台灣同鄉會前會長江玟玟



「Taiwan Yes Taiwan Song 台灣夜市台灣頌」小吃美食園遊會熱鬧情景

Katy「億佳超市」七月將盛大開幕 位於黃金地段 亞洲新天地旺鋪招商中



「億佳超市」即將開幕，所在的建築是紅磚外牆，看起來非常大氣



亞洲新天地位於 S. Mason Road 與 Highland Knolls Dr. 交叉口，周邊環繞發展成熟的住宅區與商圈，位居 Katy 的心臟地帶



「億佳超市」鄰近有許多知名的店家



「億佳超市」供應亞洲人慣用的各種蔬果與生活必需品



廣場內停車位充足，方便來此購物的民衆

(記者韋寬凱蒂報導) Katy 市近年來的發展速度有目共睹，不僅多家大公司在這有發展據點，也吸引大批年輕的專業人士在此安家立業，其中包括許多華裔民衆。人口不斷的湧入之下，引發各層面的需求，一個又一個商業廣場方興未艾。目前最受 Katy 華裔民衆所矚目的，莫過於位在亞洲新天地的「億佳超市」將於七月開幕，此廣場地處 Katy 黃金地段，原本就是交通樞紐，加上這個新的亞洲超市將於七月營業，預計未來會是新人潮匯集中心。

「億佳超市」集團在美國中部、南部都有超市，由一個富有經驗的管理團隊所經營，供應亞洲人慣用的各種生猛海鮮、新鮮蔬果、肉類、南北雜貨、零食、熟食等，讓顧客一次就能買齊日常生活各種必需品。

「億佳超市」所在的建築是紅磚外牆，外表看起來非常大氣，廣場內停車位充足，有超過 460 個位置。超市內部挑高夠，空間相當寬闊，現正裝潢之中。目前超市內有旺鋪正在招租，從 200 呎到 750 呎都有，大小可調整，歡迎餐飲業、與各種零售業來與超市

共享空間與商機。

Katy 位於休士頓最大的東西向主幹道 10 號高速公路的兩側，又有 Grand Parkway 貫通，地理位置非常好，眾所周知的 Katy Mills Mall 是休士頓最大的 outlets。近幾年來，能源走廊的範圍逐漸向 Katy 擴展，至少有六家能源公司在 Katy 設廠，人口增加迅速，房地產亦非常興盛。

「億佳超市」所在這個廣場有個別緻的名稱，叫 Little Asia 亞洲新天地，位於 S. Mason Road 與 Highland Knolls Dr. 交叉口，周邊環繞發展成熟的住宅區與商圈，位居 Katy 的心臟地帶。根據房地產資料庫所統計，在亞洲新天地 5 mile 之內約有超過 25 萬的人口，此處不僅交通便利，學區也好，加上業主有意將此打造成國際化與中國風融合的新型商場，未來的繁華是肯定的。

除了「億佳超市」內有旺鋪招租，亞洲新天地也在熱烈招商中，希望打造成結合超市、美食、生活服務為一體的多功能購物廣場。這裡地點佳，進出流量高，環境好，歡迎餐飲業、化妝品、服裝、酒莊、花店、

保健品、旅行社、課輔班、診所、及其他等各類型店家來進駐，黃金店面正在等著主人！

負責招商的 Midland Realty Group 項目負責人 Ben Ho 表示，一個有美食、購物的複合式廣場，更能滿足消費者林林種種的生活需求，超級市場、美食餐飲、流行時尚、零售業集中於一個廣場內，將引進更多人潮，滿足不同客層的需要，店家與商場巨大的人流量能相得益彰。目前，已經與多家知名的餐飲店接洽中，Katy 第一家港式點心店即將在此進駐，還有著名的韓式冰淇淋店 Milkcow、化妝品店、健康食品店，以及台灣小吃、泰式餐廳、東南亞餐館。目前仍有數家店舖正在招租，歡迎洞悉商機的店家把握機會。

詳情可洽 Ben Ho, Cell: 713-539-8188. Office: 713-988-9688. Email: benho@midlandrg.com

Little Asia 亞洲新天地的地址是 1525 S. Mason Rd., Katy, TX 77450。